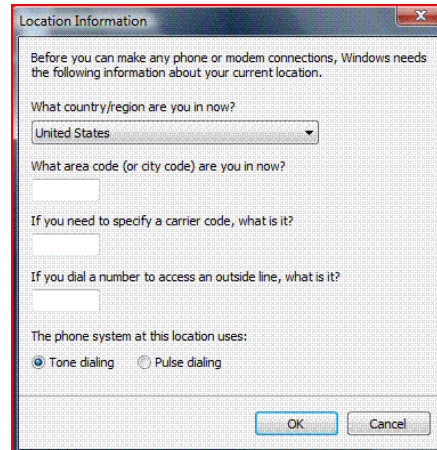


# iMetWeb.Net Setup for Windows Vista

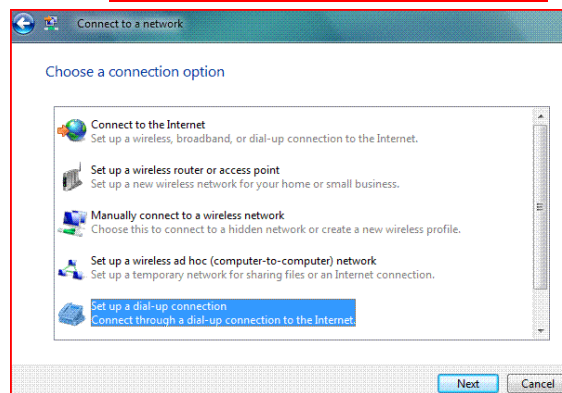
The **first time** you create a dial-up connection, you will be prompted for location information. It is important to specify the correct country, and dialing information. The standards for telephone operation differ in various countries. Incorrect country selection may prevent the modem from functioning properly - including dial-tone and call-progress detection. You can reach the screen to create a connection from **Start -> Connect To** (and click on "Set up a connection or network"), or from **Control Panel -> Network and Sharing Center** (and click on "Set up a connection or network").

After you have set the location, you can change and edit it with the Phone & Modem options in Control Panel.

You can also create New locations. (Helpful if you have a mobile computer that you use in various locations.)



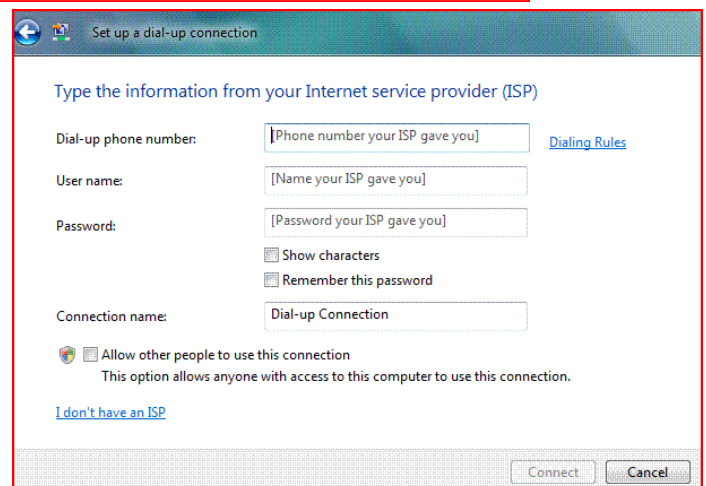
To create a new connection, click on "Set up a dial-up connection"



Enter the Phone Number –  
**Marysville** 644-9234, or **Richwood** 268-4109

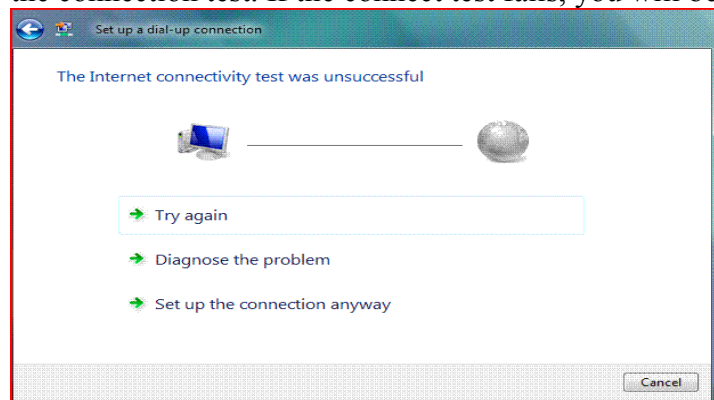
You may enter your username and password, or, you can leave them blank and you'll be prompted for them when you attempt to make a connection.

You can put a descriptive name in the "Connection name" box, just type in **iMetWeb.Net**.



**If you check the "allow other people..." box, the connection will be available to all users of your computer; if you leave it unchecked, only your username will have access to it.**

After you have entered a phone number in the "Set up a dial up connection" window as shown above, the "Connect" button becomes clickable. There is no "Save" button - only "Connect" and "Cancel". You must click on "Connect" to save the connection, which will start an attempt to make a connection using the username and password (if any) you entered. This dialog will have a "Skip" button which you can use to skip the connection test. If the connect test fails, you will be shown a window similar to below:



If you select "Try again", Windows will make another attempt to dial the iMetWeb and connect. If you select "Diagnose the problem" you will be presented with a window that says there is no problem. (Apparently, Windows Vista is unable to diagnose any dial-up problems at all - every test made results in the problem being diagnosed as no problem.) Or, you can select "**Set up the connection anyway**", or click "Cancel" which will abort the attempt to set up a dial-up connection.

Once the connection has been set up, you can use it, or edit it.

To set up email (Windows Mail)

Click "Start", then click, "Email – Windows Mail". If this is the first time setting up email on this computer, it should start you on the next step. If another service has been installed, you will need to have the Windows Mail window open, and at the top, click "Tools", then click "Accounts". Remove any accounts not needed under the "Mail" tab, then on the right side, click "Add", then click on "Mail".

Enter your Display name. This is your proper name or family name that can have capital letters. Then click next.

Type in your email address, which is your **username@imetweb.net** (all little letters), then click "Next".

On the first box, it should show "POP3", and below, type in the longer box, **pop.imetweb.net** under Incoming mail (POP3, IMAP or HTTP) server. In the Outgoing mail (SMTP) server box type in, **smtp.safepages.com** (Dial-up users) (DSL customers should enter in **smtp.imetweb.net**), then click "Next".

Type in your username in the Account name box, enter in your password if you want it to be saved. Do not check the box for "Log on using Secure Password Authentication(SPA), then click "Next", then click "Finish". Then close the Accounts window, and close Windows Mail.